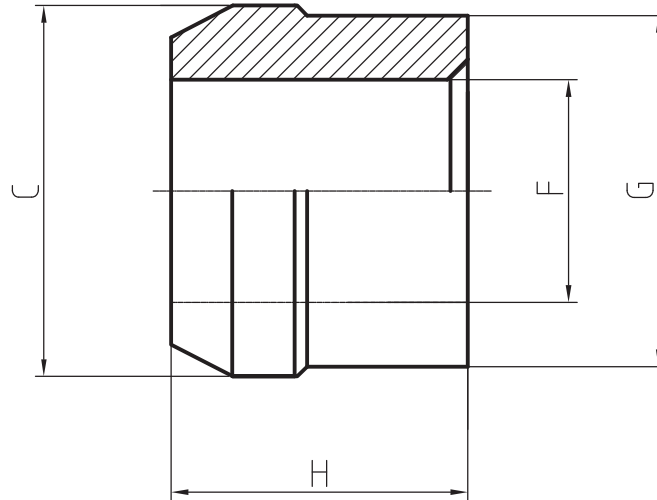


ERSC X-G - Standard Collars 12.7mm - 28.6mm (1/2" - 1 1/8")



Technical Requirements

Material: Low carbon steel
Smooth Surface: Without burr

Heat Treatment: Annealing. Hardness: HRB50-75
Surface Treatment: 10 µm zinc clear and waxed

Size	F (mm)		F (inch)		G (mm)		G (inch)	
	Min	Max	Min	Max	Min	Max	Min	Max
ERSC 16G	13.10	13.70	0.515	0.539	19.45	20.30	0.765	0.799
ERSC 20G	16.55	16.85	0.651	0.663	24.65	25.60	0.970	1.007
ERSC 24G	19.70	20.05	0.775	0.789	29.60	29.95	1.165	1.179
ERSC 28G	23.15	23.70	0.911	0.933	34.20	34.90	1.346	1.374
ERSC 28G	26.05	26.65	1.025	1.049	39.00	40.00	1.535	1.574
ERSC 28G	29.25	29.95	1.151	1.179	44.25	44.95	1.742	1.769

Size	C (mm)		C (inch)		H (mm)		H (inch)	
	Min	Max	Min	Max	Min	Max	Min	Max
ERSC 16G	20.60	21.40	0.811	0.842	15.50	16.35	0.610	0.643
ERSC 20G	25.60	26.40	1.007	1.039	21.50	22.20	0.846	0.874
ERSC 24G	30.60	31.40	1.204	1.236	23.65	24.35	0.931	0.958
ERSC 28G	35.60	36.40	1.401	1.433	27.55	28.25	1.084	1.112
ERSC 28G	40.30	41.40	1.586	1.629	31.25	32.35	1.230	1.273
ERSC 28G	45.90	46.80	1.807	1.842	35.20	36.15	1.385	1.423